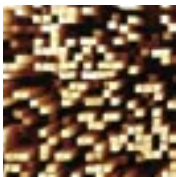


»»» CERTIFYING BRITISH COLUMBIA'S FOREST MANAGEMENT

Quick facts:



- » **British Columbia's forest industry is a leader in independent third-party certification.**
- » **Canada has 115.6 million hectares (285.6 million acres) of lands managed under International Standard Organization requirements or third-party certification – more than any other country in the world.**
- » **BC accounts for almost half of Canada's total of certified lands.**

Forest companies operating in B.C. must meet or exceed the high forest management standards demanded by government. They also have a high level of third-party certification, which gives customers added assurance that they are practising responsible and sustainable forest management.

Virtually every major B.C. forest company has either achieved or is pursuing certification, and it has become a priority for small forestry operators, mills and manufacturers. At the end of 2002, about 70 per cent of the wood harvested in B.C. came from forest operations that met International Standard Organization or other certification requirements.

Canada has 115.6 million hectares (285.6 million acres) of lands managed under ISO requirements or third-party certification, more than any other country in the world – and B.C. accounts for almost half of this.

Almost one-third of B.C.'s certified lands, or 14.9 million hectares (36.8 million acres), is certified under the Canadian Standards Association, the Sustainable Forestry Initiative or the Forest Stewardship Council – this is an area as big as the entire state of Michigan.



CERTIFICATION SYSTEMS USED IN BC

The **International Standard Organization** certifies a company's environmental management system, and includes requirements covering all environmental aspects of forest operations. Most of B.C.'s major forest companies have certified to ISO 14001 international environmental standards.

B.C. has 5.3 million hectares (13.1 million acres) certified under the **Canadian Standards Association**. CSA certifies management systems and specific forest management performance measures developed through public consultation. It includes a chain-of-custody system, which tracks a wood product from a tree in the forest through all the steps of processing and production until it reaches the consumer. The Council of European Paper Industries has ranked the CSA as among the best in the world and the American Forest and Paper Association recognizes it as the functional equivalent of the Sustainable Forestry Initiative.

Virtually every major BC forest company has either achieved or is pursuing certification.





BC Forest Facts

www.bcforestinformation.com



»»» B.C. has 9.5 million hectares (23.5 million acres) certified under the **Sustainable Forestry Initiative**, developed by the American Forest and Paper Association. The SFI program requires companies to meet a comprehensive system of principles, objectives, performance measures and core indicators for forest management. SFI is guided by an independent sustainable forest board and includes an SFI product label for use by qualified participants.

The **Forest Stewardship Council** has principles and criteria to assess plans and on-the-ground performance, and may include a certified products label. A regional standard for B.C. has been developed but has not yet been approved by FSC International for use. As a result, few FSC certifications have occurred to date. However, 89,130 hectares (220,237 acres) in B.C. have been certified by individual FSC certifiers operating with their own checklists.



»»» *Forest companies operating in BC must meet or exceed the high forest management standards demanded by government.* «««



PHOTOGRAPHY: BC MINISTRY OF FORESTS AND SPECIAL THANKS TO CANDACE KENYON



For more information:

Market Outreach Network delivers facts about B.C.'s sustainable forest management on behalf of B.C.'s government, industry and communities.

Visit our Web site at www.bcforestinformation.com to learn more about B.C. forests and how the province has become a world leader in forest management.

Suite 1200
1130 West Pender Street
Vancouver BC
Canada V6E 4A4
Tel: (604) 685-7507
Fax: (604) 685-5373
E-mail: info@bcmcn.ca